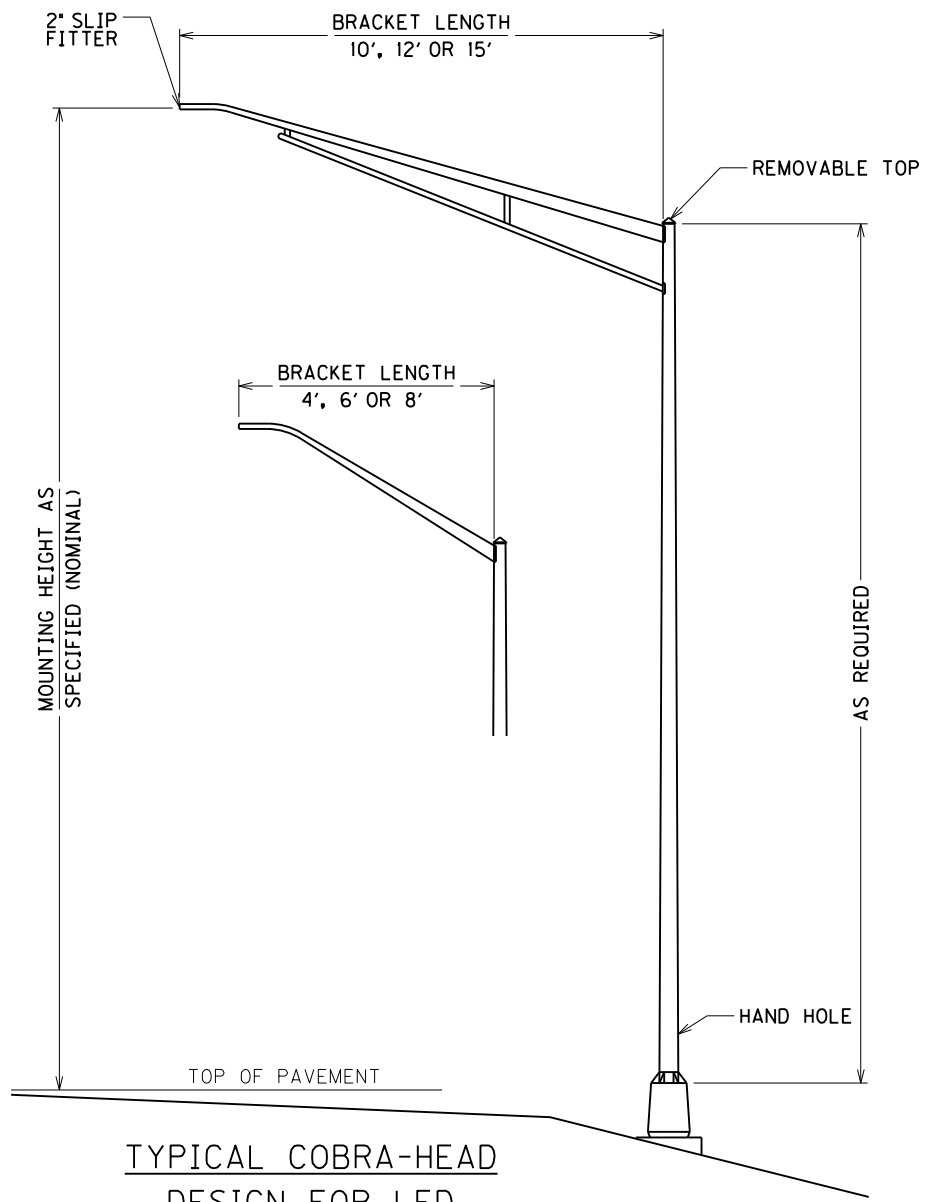
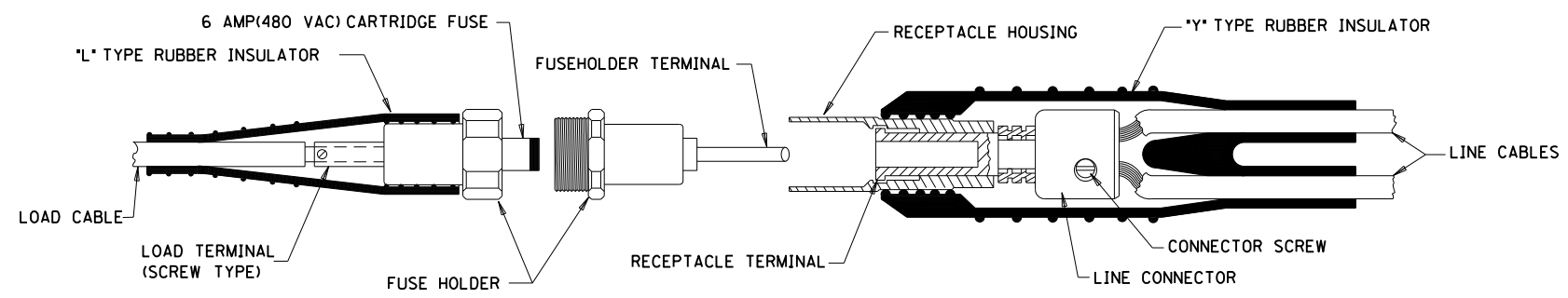


BREAKAWAY FUSE CONNECTOR KIT

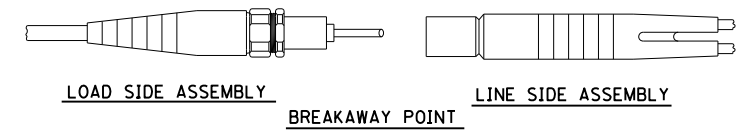


**TYPICAL COBRA-HEAD
DESIGN FOR LED
LUMINAIRES**

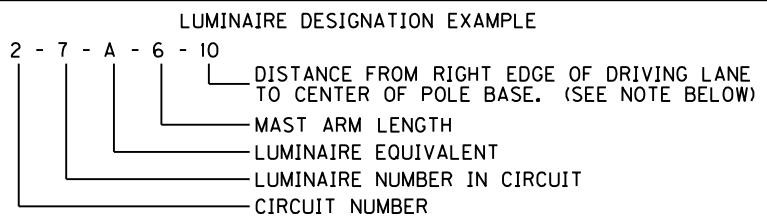
SPECIAL NOTE:
ALL LUMINAIRES SHALL HAVE THE NEMA LABEL
INSTALL ON THE BOTTOM OF THE FIXTURE TO
VERIFY THE WATTAGE.



DETAILS OF TYPE HEB-JW-RYC CONNECTOR



TYPE HEB-JW-RYC CONNECTOR SHOWN



NOTE: IF NO SETBACK DIMENSION IS INDICATED, THE MAST ARM LENGTH DENOTES THE DISTANCE FROM THE RIGHT EDGE OF PAVEMENT TO CENTER OF POLE BASE.

NOTE:
ALL TYPE A LUMINAIRES ARE MOUNTED AT 30' (NOMINAL) LED EQUIVALENT TO 100 WATTS HPS.
ALL TYPE B LUMINAIRES ARE MOUNTED AT 30' (NOMINAL) LED EQUIVALENT TO 150 WATTS HPS.
ALL TYPE C LUMINAIRES ARE MOUNTED AT 40' (NOMINAL) LED EQUIVALENT TO 250 WATTS HPS.
ALL TYPE D LUMINAIRES ARE MOUNTED AT 40' (NOMINAL) LED EQUIVALENT TO 400 WATTS HPS.

**COBRA-HEAD LUMINAIRE/FUSE
CONNECTOR DETAILS**

FILE NAME: C:\PWORK\TED.SWANSEGAR\UMS2875A\03-COBRAFUSE (CL).DGN
 USER: ted.swansegar
 DATE PLOTTED: January 30, 2018
 E-SHEET NAME:
 MicroStation v8.11.7.443